

2022-2027

BOND

PROGRAM

City of San Antonio



CITY OF SAN ANTONIO
**PUBLIC WORKS
DEPARTMENT**

District 1 West End Park & Multigenerational Recreation Facility

Community Information and Input Meeting

October 12, 2023

Presented by Public Works & Department of Human Services

Agenda

- Welcome and Introductions
- Project Information
- Public Comments & Questions

2022-2027

BOND

PROGRAM

City of San Antonio



PROPOSED 2022-2027

BOND PROGRAM

City of San Antonio



INFORMATION GUIDE



APPROVED

May 7, 2022

West End Park & Multigenerational Recreational Facility

Project Information

- Proposition 3: Parks, Recreation and Open Space Improvements
- \$8 Million Total Project Budget
- Renovate, rehabilitate and construct additions to the West End Park Senior Center and West End Park to create a multigenerational facility that will support senior and constituent services, meeting space, and other recreational services.



West End Park & Multigenerational Recreational Facility

Senior Services Programs

Activities and programming for seniors ages 60 and older:

- Fitness Equipment
- Exercise & Dance Classes
- Art, Creative Writing & Computer Classes
- Congregate Noon Time Meal
- Health Screenings & Wellness Education
- Social Services & Financial Counseling
- Recreational Activities
 - Bingo, Loteria, Card Games, Table Tennis, Billiards
 - Movie Screenings, Field Trips, Fairs
 - Educational Presentations, Resources
- Transportation



West End Park & Multigenerational Recreational Facility

Project Scope

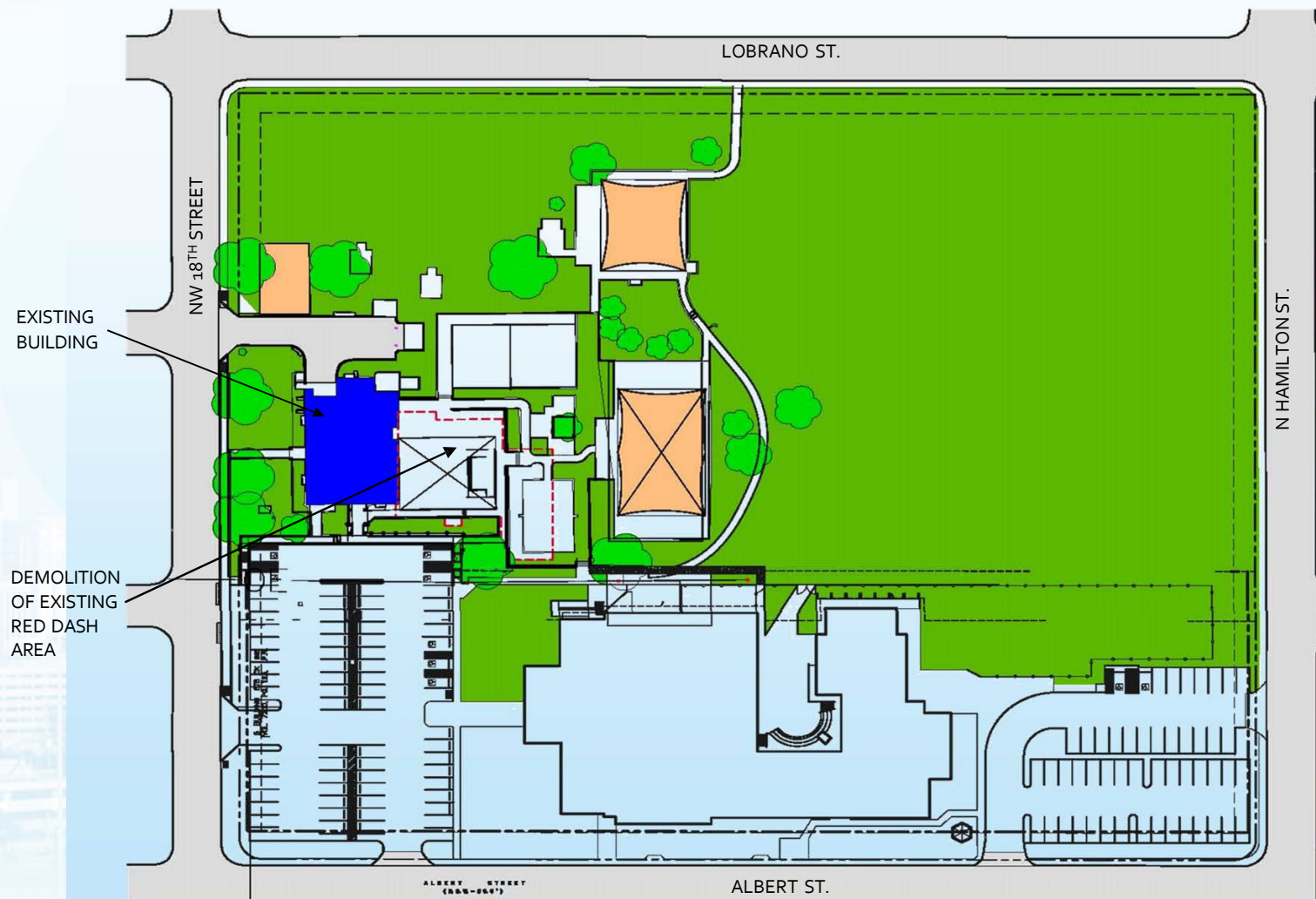
An approximately 7,380 SF single story addition to the existing Senior Center for senior and constituent services:

- Reception/Waiting area
- Classrooms
- Exercise area
- Lounge area with game tables
- Quiet activity area
- Health screening room & staff offices
- Satellite Council Office
- Additional parking spaces
- Vehicular drop off area



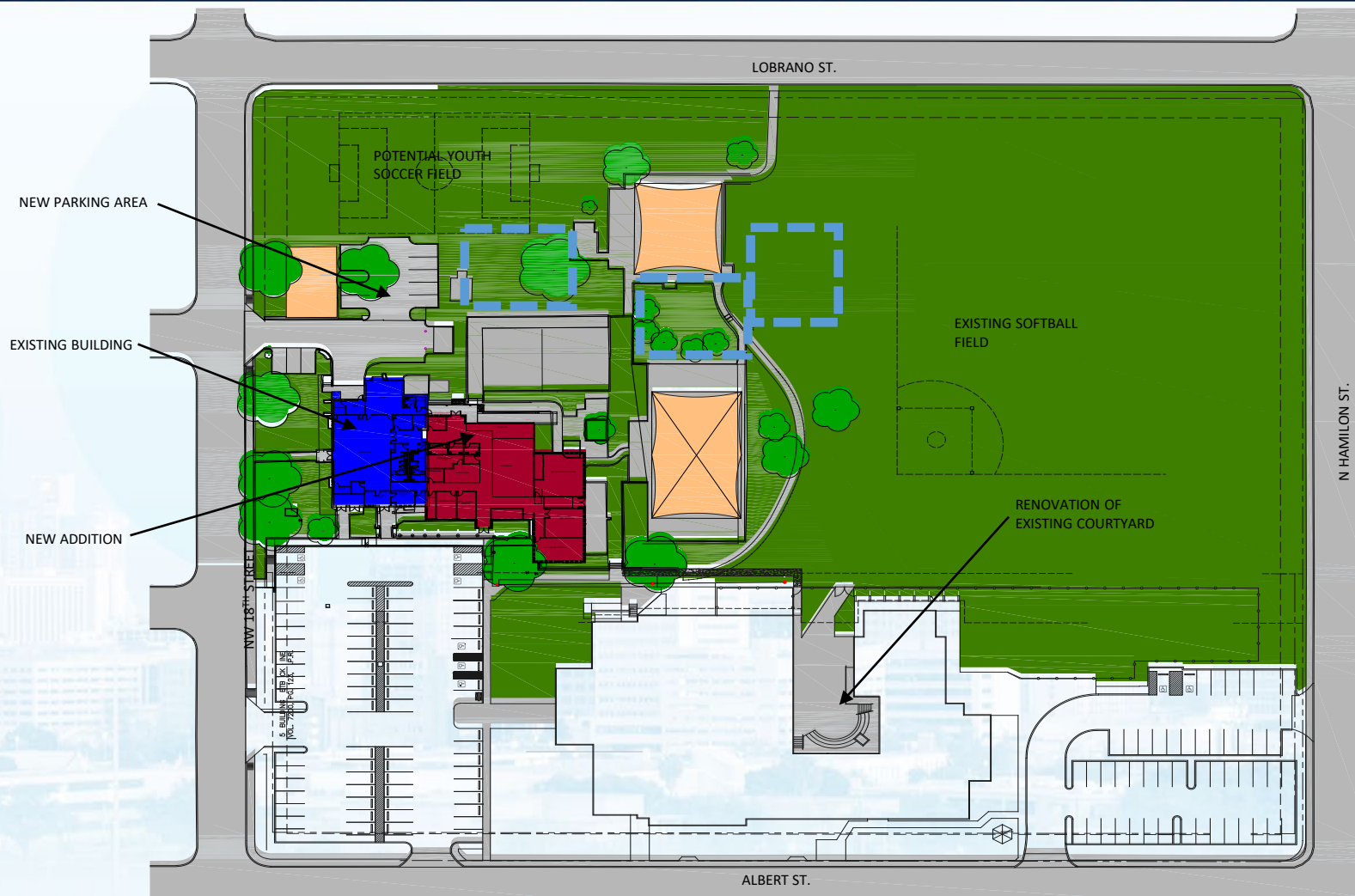
West End Park & Multigenerational Recreational Facility

Existing Site Plan



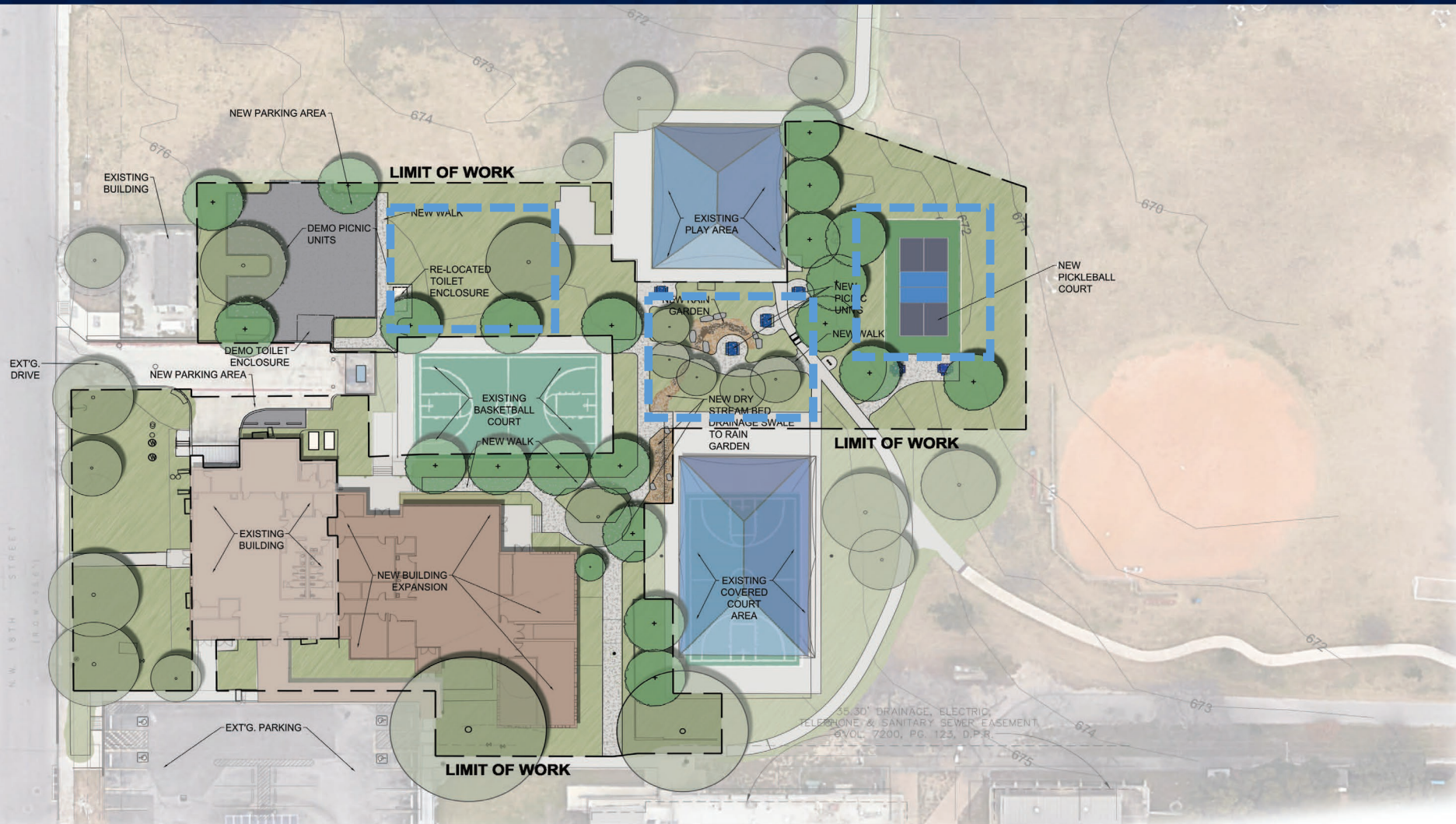
West End Park & Multigenerational Recreational Facility

New Site Plan



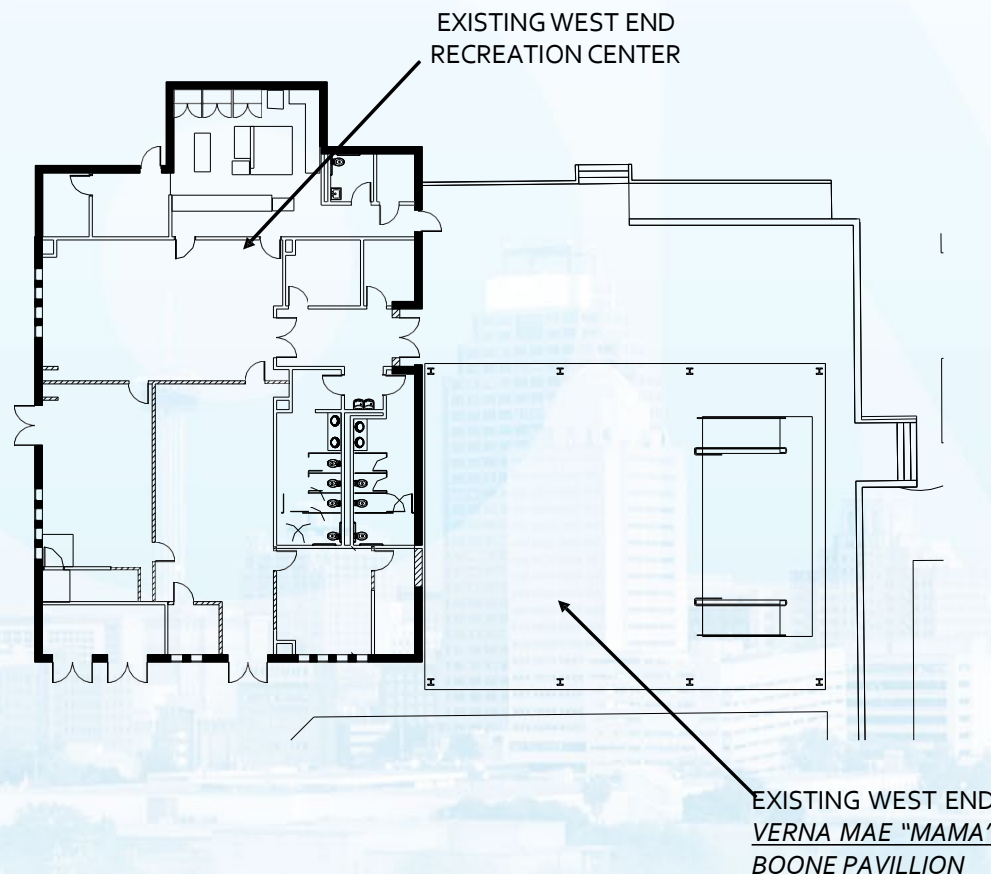
West End Park & Multigenerational Recreational Facility

Proposed Landscape Plan



West End Park & Multigenerational Recreational Facility

Existing Floor Plan

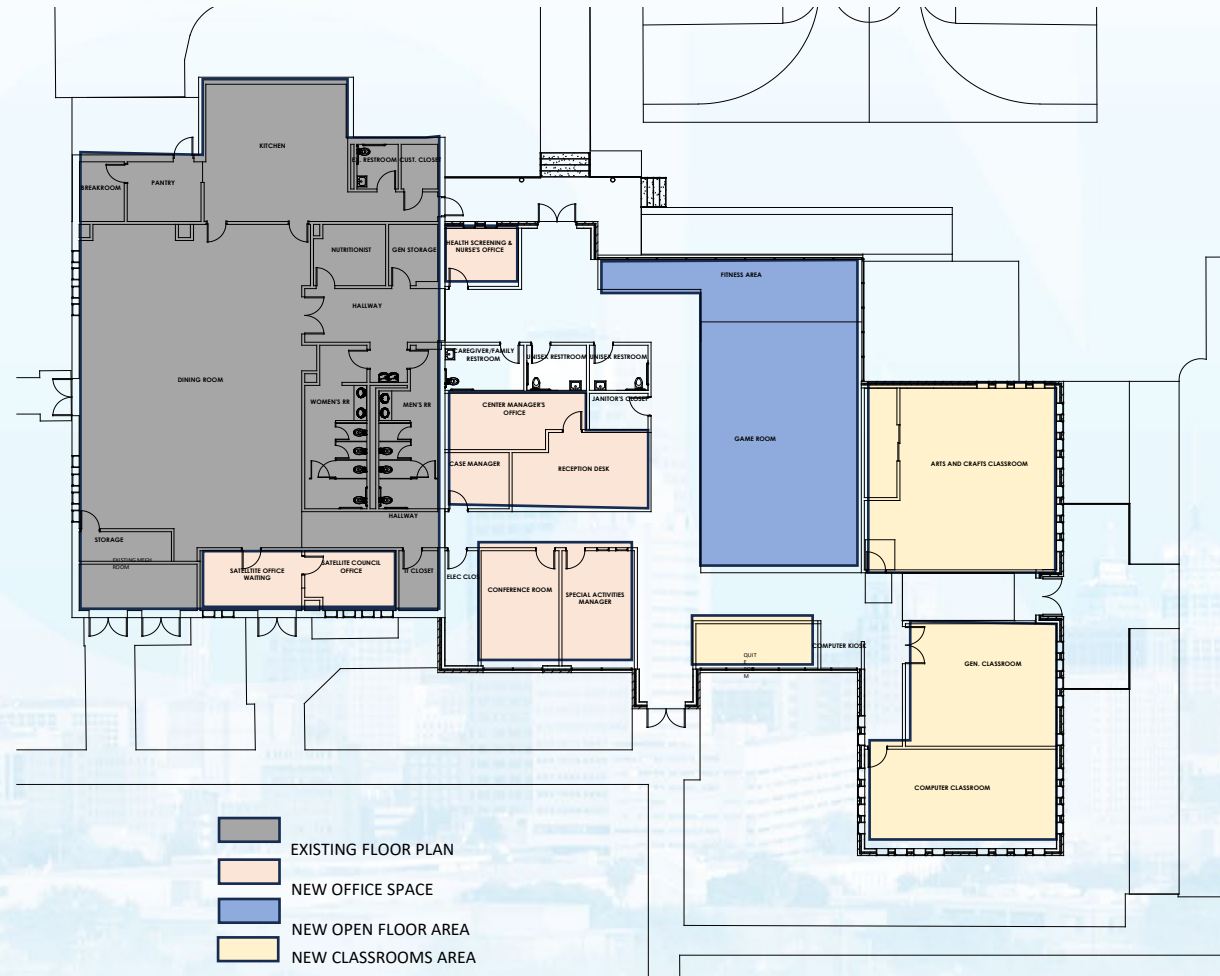


OPTIONS FOR VERNA MAE "MAMA" BOONE PAVILLION:

1. RELOCATE THE EXISTING PAVILLION TO ANOTHER LOCATION IN THE PARK.
2. RENAME THE EXISTING DINING ROOM TO THE VERNA MAE "MAMA" DINING HALL
3. NAME ONE OF THE NEW PATIOS TO THE PARK TO THE VERNA MAE "MAMA" PAVILLION

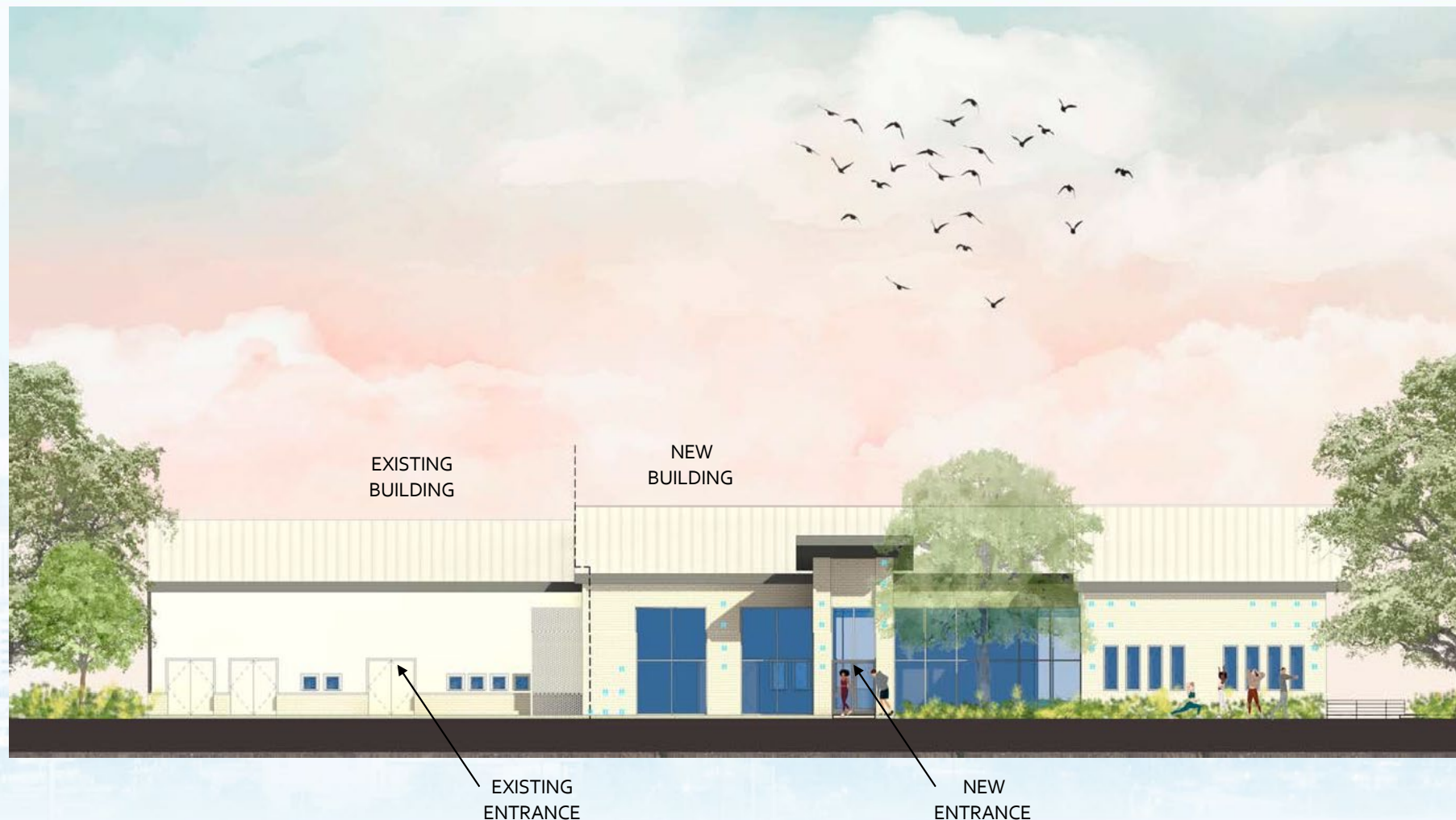
West End Park & Multigenerational Recreational Facility

New Floor Plan



West End Park & Multigenerational Recreational Facility

Front Elevation



West End Park & Multigenerational Recreational Facility

Park Elevation



West End Park & Multigenerational Recreational Facility

Rear Elevation



West End Park & Multigenerational Recreational Facility

View From 18th Street



West End Park & Multigenerational Recreational Facility

View from Park



Cathleen Crabb

Senior Architect

(210) 207-8218

Email@sanantonio.gov

CONNECT WITH US!



#SA2022Bond | www.sanantonio.gov/2022Bond