



O. P. Schnabel Bike Park

Earl Rudder Middle School

Pre-Design Public Input Meeting
August 9, 2022 | Presented by Public Works

Agenda

- Welcome and Introductions
- Park Expansion & Previous Plans
- Park Area Existing Conditions
- Potential Park Improvements & Funding
- Your Input
- Process & Schedule
- Final Comments & Questions

2022-2027

BOND

PROGRAM

City of San Antonio

Agenda

- Welcome and Introductions
- Park Expansion & Previous Plans
- Park Area Existing Conditions
- Potential Park Improvements & Funding
- Your Input
- Process & Schedule
- Final Comments & Questions

2022-2027

BOND

PROGRAM


City of San Antonio




PROPOSED 2022-2027

BOND PROGRAM

City of San Antonio



INFORMATION GUIDE



APPROVED

May 7, 2022



Introductions

Project Staff & Design Team

Introductions

San Antonio Public Works Department
Desiree Salmon, PLA, SITES AP
Project Manager

Mark Wittlinger
Advisory Project Manager



Introductions

San Antonio Parks & Recreation Department
Sandy Jenkins
Parks Project Manager

Tony Forshage
Assistant Parks Project Manager

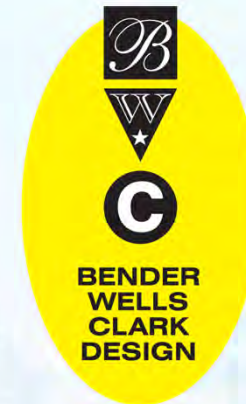


Introductions

Bender Wells Clark Design
Landscape Architecture & Planning

Beth Wells
Planner & Urban Designer

Larry Clark, PLA
Landscape Architect & Urban Designer

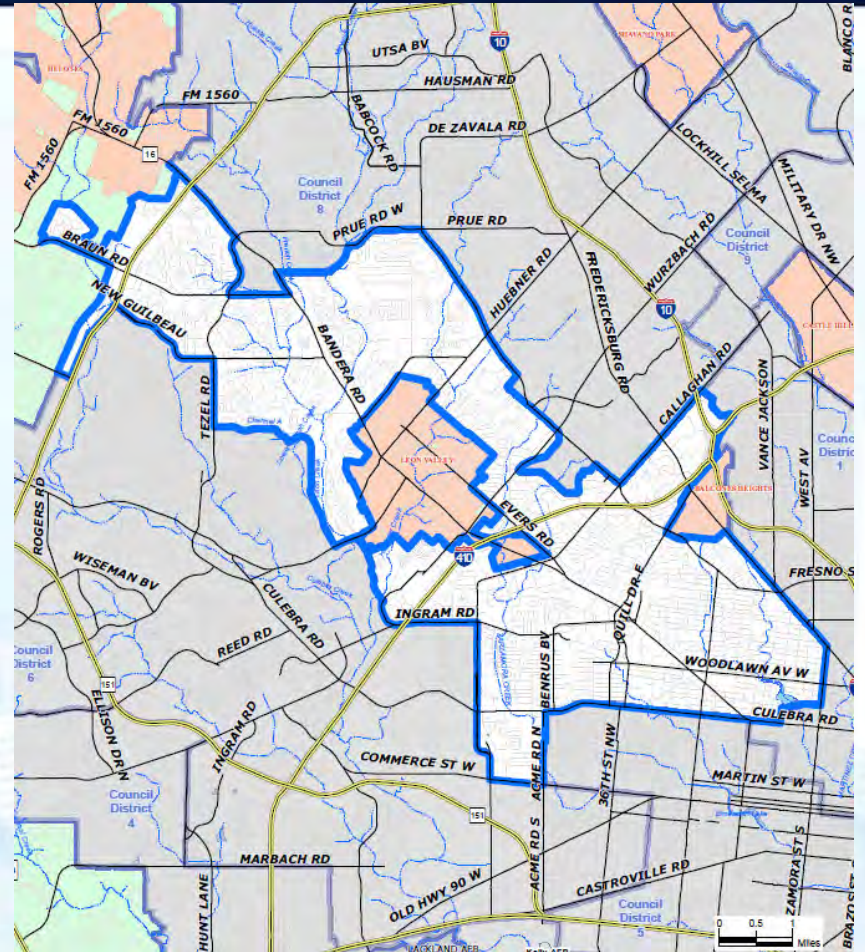


Introductions



ANA SANDOVAL, CITY COUNCIL DISTRICT 7

Andrew Solano, Chief of Staff

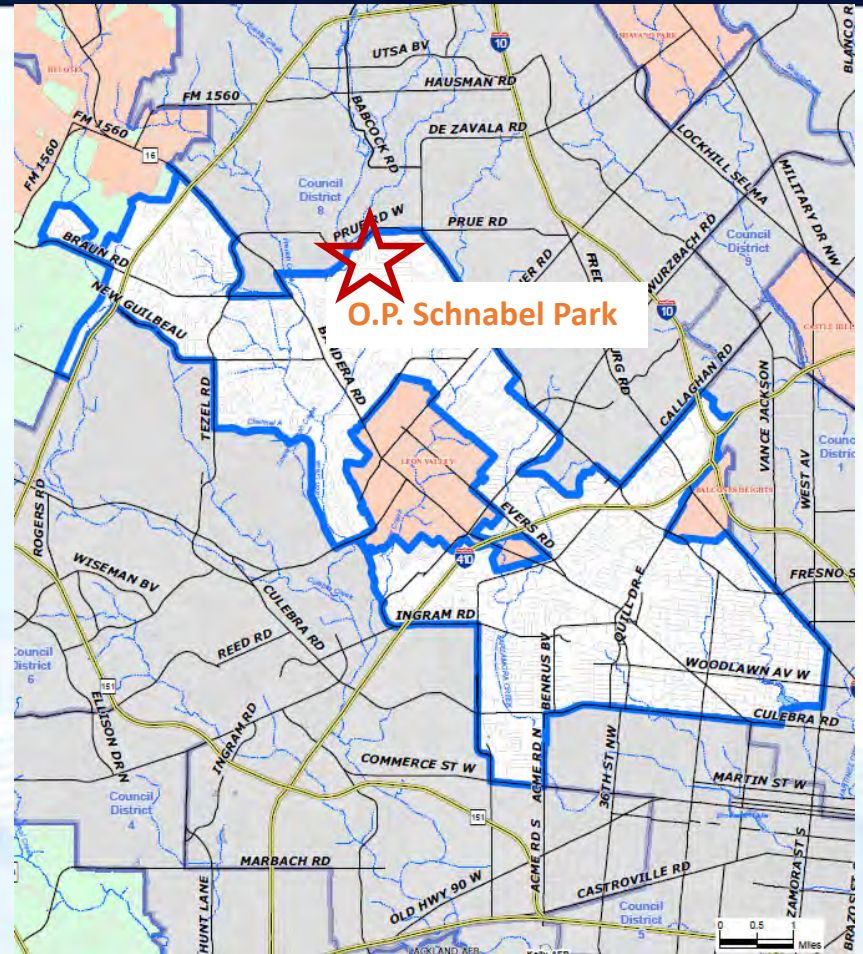


Introductions



ANA SANDOVAL, CITY COUNCIL DISTRICT 7

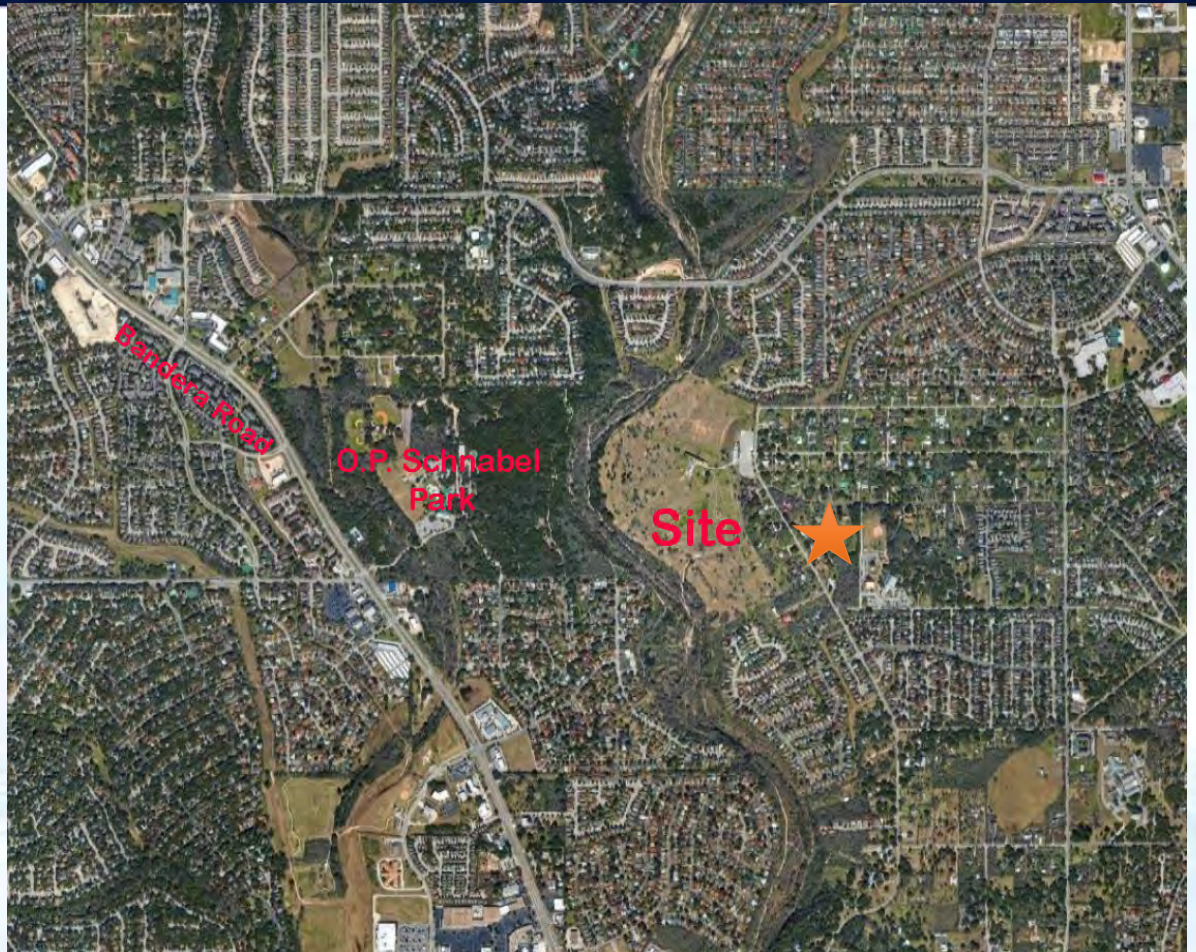
Andrew Solano, Chief of Staff



Project Information

Project Background

**Project Location:
O.P. Schnabel
Expansion**



Project Information

Project Background

**O.P. Schnabel
Expansion
Project Location**



Project Information

Project Background

O.P. Schnabel Expansion Site Concept Plan



Project Information Project Background

CONCEPT DESIGN

Southern Bike/Trail Area

The current concept depicts a series of bike activities with a pump track, mountain bike skills course, jumps and various trails at the southern edge of the park.



(North is to the Right)

Pump Track: The pump track provide bike enthusiasts of all ages to ride a series of berms and rollers that you ride without pedaling.

Mountain Bike Skills Course: The skills course provides riders the opportunity to develop riding skills through a series of obstacles and terrain conditions riders may find on larger mountain bike trails. These skills course will have sections with various levels from beginning to more advanced. The natural steep terrain in section provides a great opportunity to develop these courses.

Jump Track: A dirt jump track adjacent to the pump track is designed with a series of dirt jumps for beginners to more advanced cyclists.

Loop Trails: Along the perimeter of this area a series of hike and bike trails provide users a hardened surface and natural surface tucked in among existing and proposed trees.

Outdoor Education: Small outdoor classrooms are tucked amongst the existing shade trees.

Restrooms/Picnic Shelter: Restrooms and a picnic shelter are also planned for here.

O.P. Schnabel Expansion Site Concept Plan

Project Information

Project Background

O.P. Schnabel Expansion Site Concept Plan



Project Information

Project Background

(North is at the Top)

O.P. Schnabel Expansion Site Concept Plan



Project Information

Project Background

**Existing
Site Conditions**



Project Information

Project Background

**O.P. Schnabel
Expansion
Project Location**



Project Information

Project Background



**Existing
Site Conditions**

Project Information

Project Background

**Existing
Site Conditions**



Project Information

Project Background



Project Information

Project Background

**Existing
Site Conditions**



Project Information

Project Background

**Existing
Site Conditions**



Project Information

Project Background



**Existing
Site Conditions**

Project Information

Project Background



2022-2027

Project Information



2022-2027

Project Information



2022-2027

Project Information



2022-2027

Project Information



2022-2027

Project Information



2022-2027

Project Information







0000 0007





Project Information

Project Background

**Existing
Site Conditions**



Project Information

Project Background



**Existing
Site Conditions**

Project Information

Project Background



Project Information

Project Background



**Existing
Site Conditions**



Project Information

Park Improvement Funding

2022-2027 Bond Program \$1,675,000

- Construct general park improvements within available funding which may include roadway improvements to expand access to park areas, bicycle park, and playground amenities



Project Information

Park Improvement Funding

2022-2027 Bond Program \$3,250,000

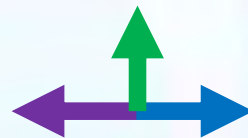
Citywide Bicycle Recreational Facilities

- Develop and construct new bicycle facilities to include BMX and Mountain Bike recreational opportunities located at O. P. Schnabel Park, Eisenhower Park and Pearsall Park within available funding

Project Information The Balancing Act

Available Funding

Public Input



Parks and Recreation Input in
conjunction with the office of
City Council District 7,
Ana Sandoval

- Individual and Group Users
- Formal and Informal Activities
- Traditional and Nontraditional Activities
- Park Connectivity
- Accessibility
- Park Identity and Features
- Special Events and Programming

- Life, Safety, Welfare and Security Issues
- Code Issues and Regulations
- Accessibility
- Park Infrastructure
- Facility and Site Upgrades
- Park Policies and Regulation
- Programming and Partnerships
- Improving Service

Project Information Potential Park Improvements



Recreational Bike Activities



**Bikes
Are
Fun!**



Project Information



Mountain bike
Cyclo-cross
BMX
Freestyle BMX
Downhill
Gravel
Cycle speedway
Time trials
Historic bikes
Recumbents
Tandems

Road bike
Cruiser
Cone courses
Velodrome track
Bike Polo
Artistic cycling
Toddler bike training
Cross country
Fatbike
Trials
E-bikes
Hybrid bikes

**Range of
Bike Activities**

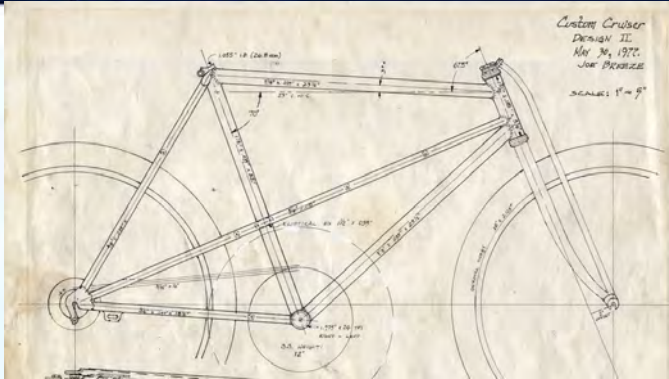
Project Information



Bike History

Project Information

Project Background



Conceptual Drawing, 1977 Breeze by Joe Breeze
Approx. Retail Price \$300



Norco Revolver 2021.
Approx. Retail Price \$9,999

The U.S. market for bicycles is estimated to be sized at **around six billion U.S. dollars**. But the economic benefits associated with riding extend far beyond that number. The nation's 60 million annual recreational bicyclists spend \$46.9 billion on meals, transportation, lodging, gifts and entertainment. One study estimates that the spill-over effects of all bicycling-related activities could be as large as **\$133 billion, supporting 1.1 million jobs and generating \$17.7 billion in federal, state, and local taxes**.

League of American Bicyclists and the Alliance for Biking & Walking

Bike Economy



Project Information Potential Park Elements

Vehicular Circulation and Access
Parking
Utilities Extensions
Grading
Drainage Features
Stormwater Management (LIDs)
Restrooms
Planting
Walks and Trails
Connection to Greenway Trails
Shade Structures

Covered Shelters
Lighting
Drinking Fountains
Irrigation and Watering
Site Furnishings
 (Tables, Benches, Trash Receptacles, etc.)
Regulatory Signage
Information / Wayfinding Signage,
And.....
Bike Elements

Project Information

Potential Park Elements

Bike Elements:

- **Pump Track**
- **Mt. Bike (MTB) Skills Course**
 - Natural Obstacles (Logs, Boulders, etc.), Balance Elements, and Terrain with a Range of Difficulty
- **Jump Track and Jump Trails**
 - Dirt Jumps with a Range of Difficulty
- **Loop Trails**
- **Bike Playground “Equipment”**
 - Walls, Tubes, and Other Obstacles
- **Kid’s Bike Skills & Education Area**
- **Bike Repair / Air Station**

Project Information

Potential Park Elements

Bike Elements:

- Pump Track



Project Information Potential Park Elements

Bike Elements:

- **Mt. Bike (MTB) Skills Course**
 - Natural Obstacles (Logs, Boulders, etc.), Balance Elements, and Terrain with a Range of Difficulty



Project Information Potential Park Elements

Bike Elements:

- **Jump Track and Jump Trails**
 - **Dirt Jumps with a Range of Difficulty**



Project Information Potential Park Elements

Bike Elements:

- Loop Trails



Project Information Potential Park Elements

Bike Elements:

- **Bike Playground “Equipment”**
 - Walls, Tubes, Fixed Ramps, and Other Obstacles

Flowform, Progressive, American Ramp, Sender, etc.



Project Information Potential Park Elements

Bike Elements:

- Kid's Bike Skills & Education Area



Project Information

Potential Park Elements

Bike Elements:

- Bike Repair / Air Station



Project Information

Potential Park Elements

Bike Elements:

- **Pump Track**
- **Mt. Bike (MTB) Skills Course**
 - Natural Obstacles (Logs, Boulders, etc.), Balance Elements, and Terrain with a Range of Difficulty
- **Jump Track and Jump Trails**
 - Dirt Jumps with a Range of Difficulty
- **Loop Trails**
- **Bike Playground “Equipment”**
 - Walls, Tubes, and Other Obstacles
- **Kid’s Bike Skills & Education Area**
- **Bike Repair / Air Station**

What Else?

What are your priorities?

**We Need
Your Ideas !**



Project Information Process & Schedule

Public Input Phase

- In Process

Survey / Analysis / Schematic Design / Design Development

- To Begin Upon Completion of Public Input Phase

Construction Documents Phase

- To Begin Upon Notice from Public Works
- Construction Documents to be completed and reviewed:
Plans, Specifications & Bid Documents

Building Permitting Phase

- Submit Construction Documents for Permitting

Construction

- Project will be Bid
- Bids & Qualifications will be Evaluated
- Contract awarded
- Construction Begins

Project Information Process & Schedule

Survey



Project Information Potential Park Elements

Any Questions?



Project Information Potential Park Elements

Your Input is Appreciated

We will be happy to take your comments in person.

Please take a moment to write down, or tell us your comments and return it to us tonight.

You may also email us with any comments or suggestions.



Project Information Potential Park Elements

Final Comments & Questions

If you desire to be added to an e-mail list for project updates or future meeting announcements, please be sure you have your name and contact information on the sign-in sheet.

Thank you.



CITY OF SAN ANTONIO
PUBLIC WORKS DEPARTMENT

THROUGH INNOVATION AND DEDICATION, WE BUILD AND MAINTAIN
SAN ANTONIO'S INFRASTRUCTURE

Desiree Salmon, PLA, SITES AP
(210) 207-2113
Desiree.Salmon@sanantonio.gov



INTEGRITY ♦ TEAMWORK ♦ INNOVATION ♦ PROFESSIONALISM



Project Information Potential Park Elements

Thank you for your time and attention!