

**2022-2027**

**BOND**

**PROGRAM**

City of San Antonio



CITY OF SAN ANTONIO  
**PUBLIC WORKS  
DEPARTMENT**

**Leon Greenway  
Connection via Port SA**  
*(Camargo Park to Pearsall Park)*

**October 21, 2024**  
**The David Monroe Education Center**  
SAMSAT  
5035 SW 36<sup>th</sup> Street  
San Antonio, TX 78226

**Design Public Meeting**

---

Presented by Public Works

# Agenda

---

- Welcome and Introductions
- Project Overview
- Greenway Vision
- Proposed Improvements
- Project Schedule
- Project Communications
- Comments and Questions

**2022-2027**

**BOND**

**PROGRAM**

City of San Antonio

# Leon Greenway Connection via Port SA (Camargo Park to Pearsall Park) Welcome Introductions



## City Council

**Dr. Adriana Rocha Garcia**  
District 4 Councilmember



## Public Works Team

**Eric Salazar, P.E.**  
Project Manager

**Colleen Hord, P.E.**  
Project Engineer

**Joe Garcia**  
Capital Projects Officer



## Design Consultant

**T-Core**  
**Jeff Tyler, P.E.**  
Project Manager





PROPOSED 2022-2027

# BOND PROGRAM

City of San Antonio



## INFORMATION GUIDE



# APPROVED

**May 7, 2022**



# Leon Greenway Connection via Port SA (Camargo Park to Pearsall Park) Project Overview

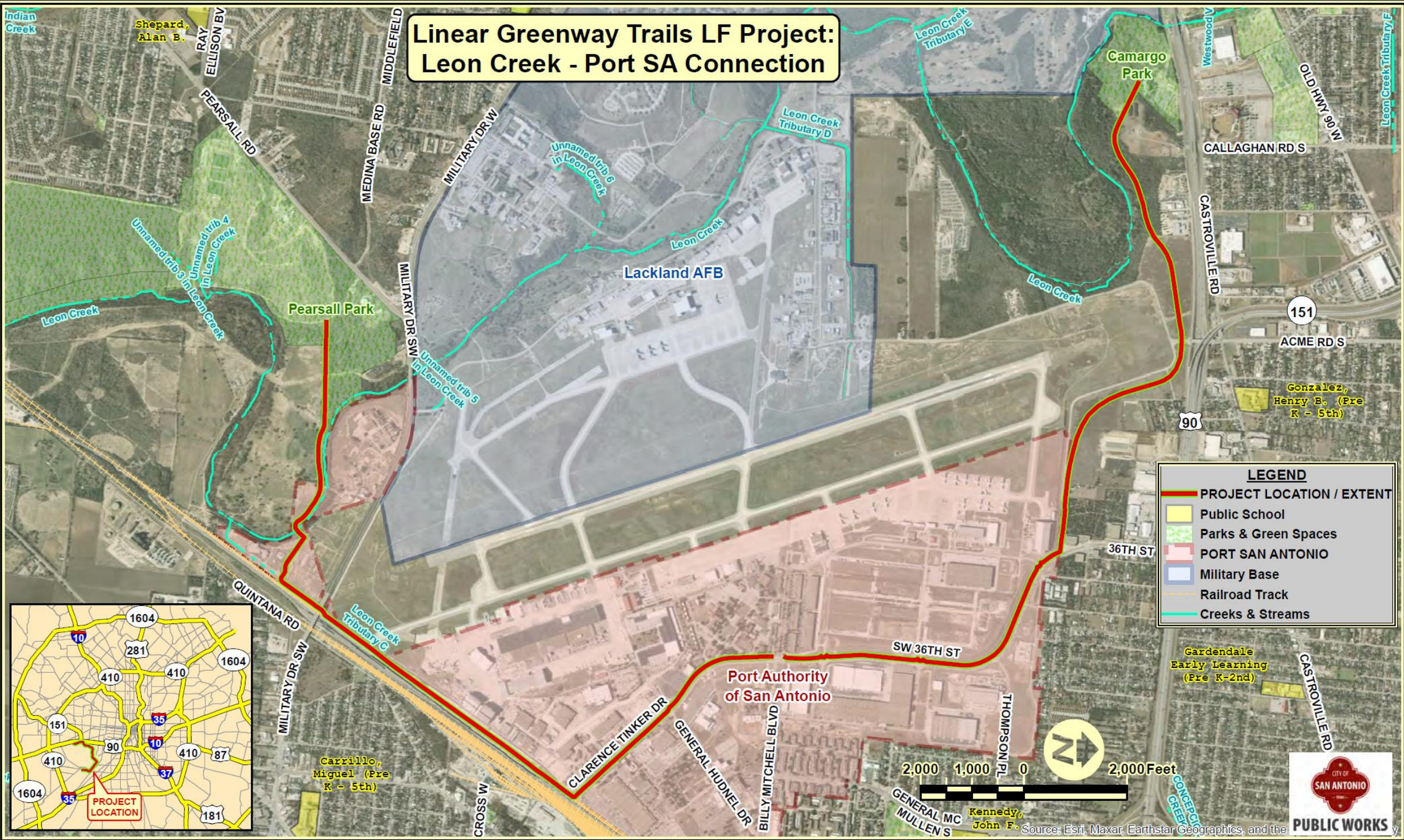
- Design a trail connection with trailheads, signage, landscaping, and other amenities
- Limits: Camargo Park to Pearsall Park through Port San Antonio



Berman Rd and Clarence Tinker Dr Intersection – Looking West



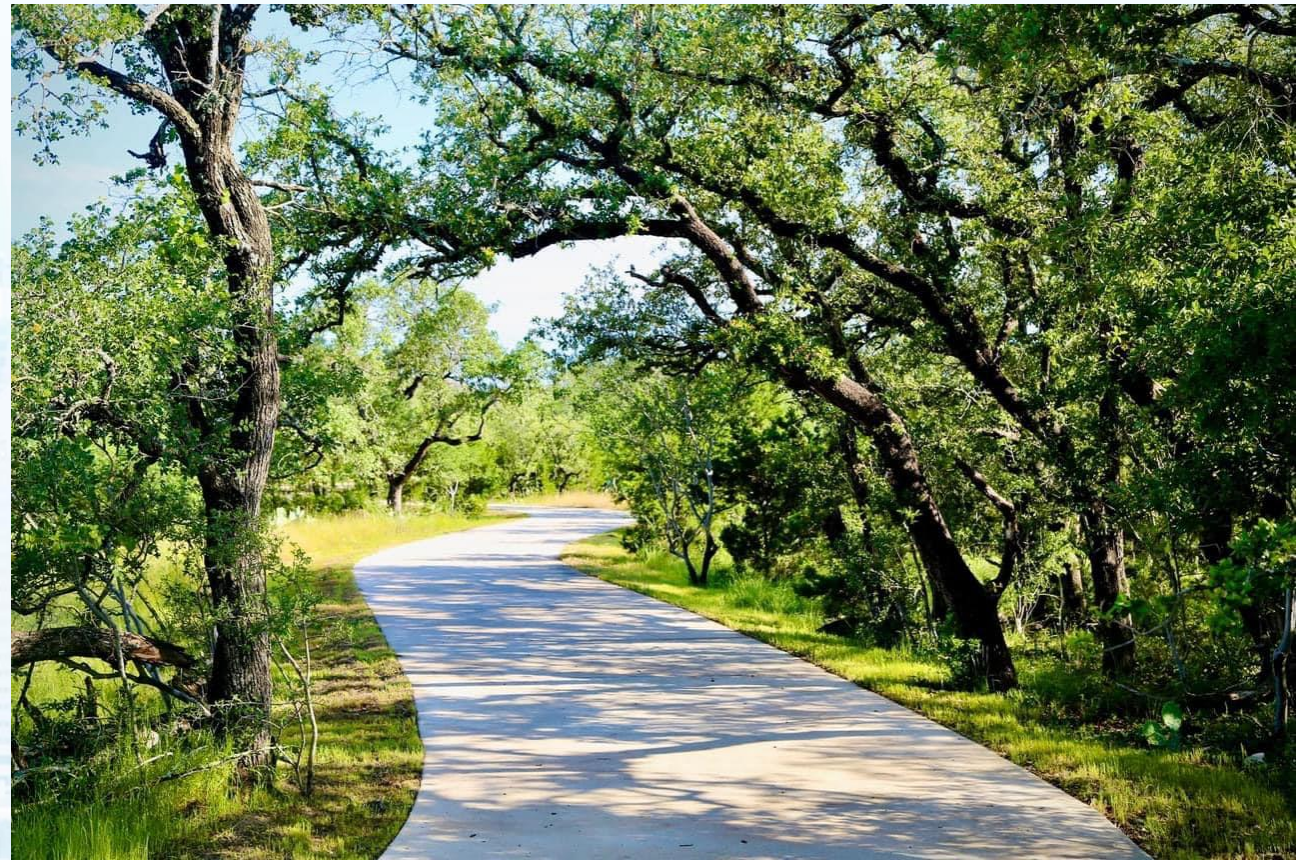
# Linear Greenway Trails LF Project: Leon Creek - Port SA Connection





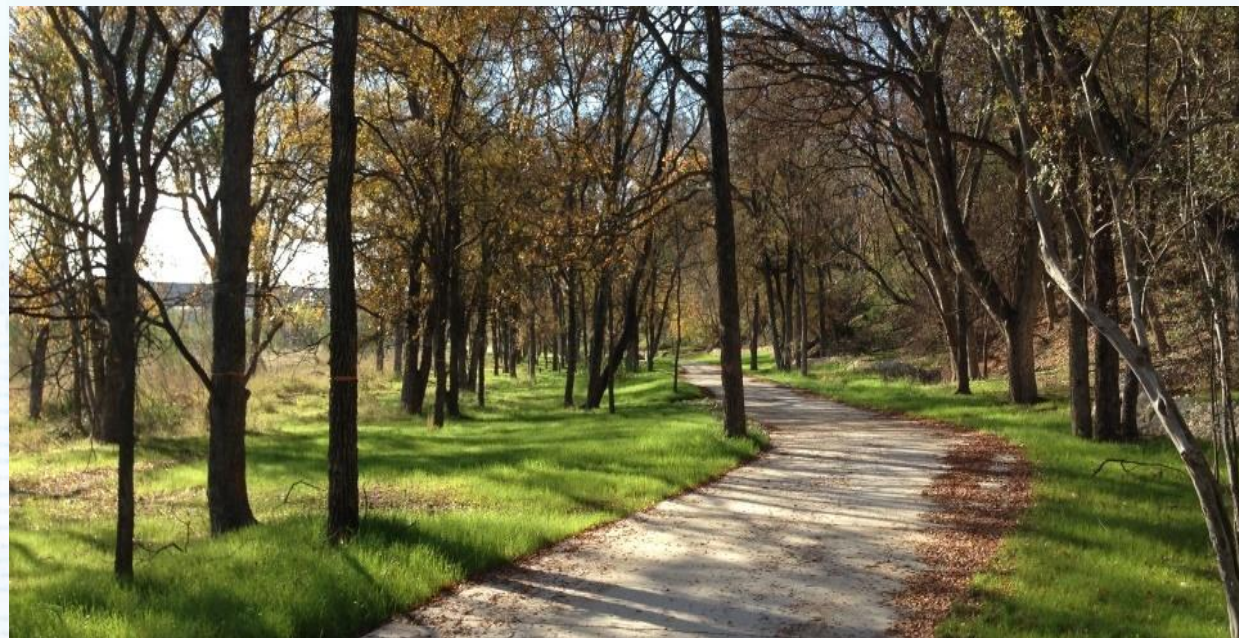
# Leon Greenway Connection via Port SA (*Camargo Park to Pearsall Park*) Greenway Vision

- Enhance the quality of life for San Antonio residents and visitors
- Expand recreational opportunities and park access
- Building blocks for pedestrian and bicycle connectivity





# Leon Greenway Connection via Port SA (Camargo Park to Pearsall Park) Greenway Vision





# Howard W. Peak Greenway Trails System Plan

## City of San Antonio



Greenway Trail Location





# Leon Greenway Connection via Port SA (Camargo Park to Pearsall Park) Proposed Improvements

## Improvements Overview

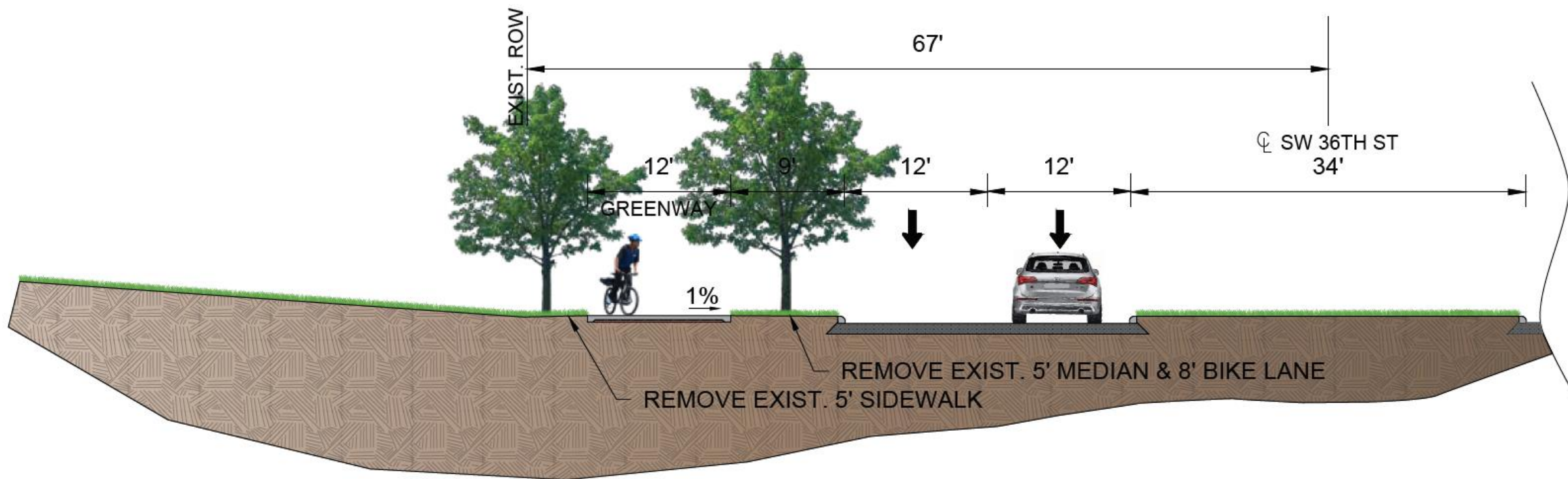
- 7.54 Miles Continuous Trail with Amenities
- Two-three Trailheads
- Two Park Connections
- Over 500 New Trees
- Four Pedestrian Bridges





# Leon Greenway Connection via Port SA (Camargo Park to Pearsall Park)

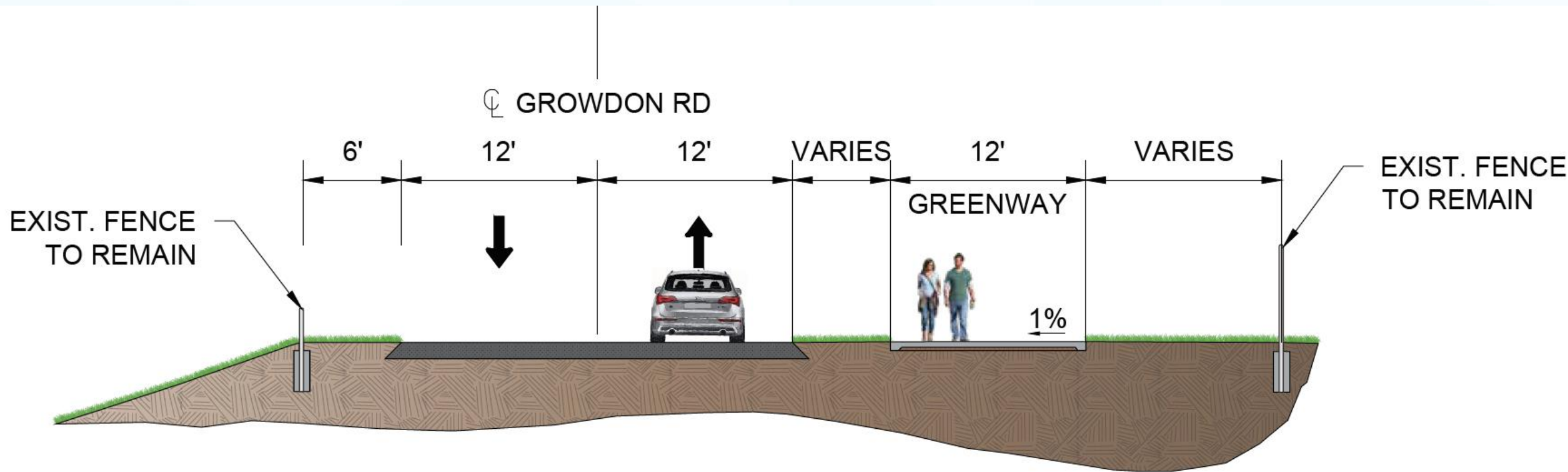
## Proposed Improvements – Street View and Greenway View





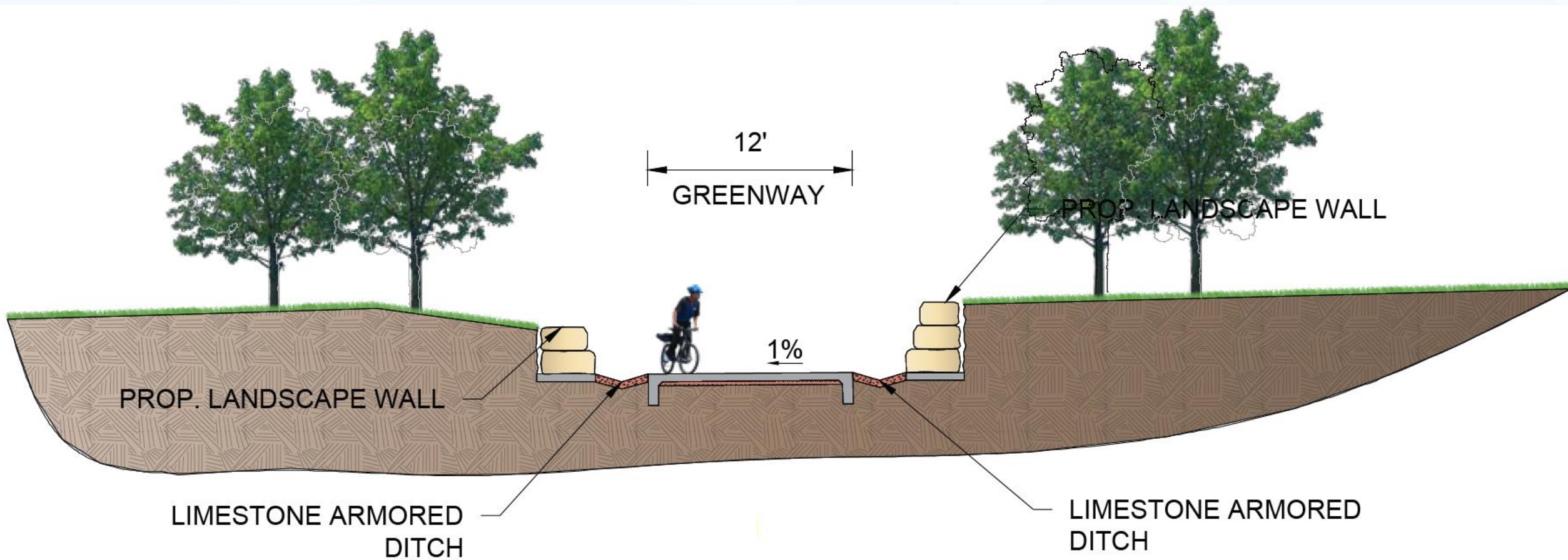
# Leon Greenway Connection via Port SA (Camargo Park to Pearsall Park)

## Proposed Improvements – Street View and Greenway View



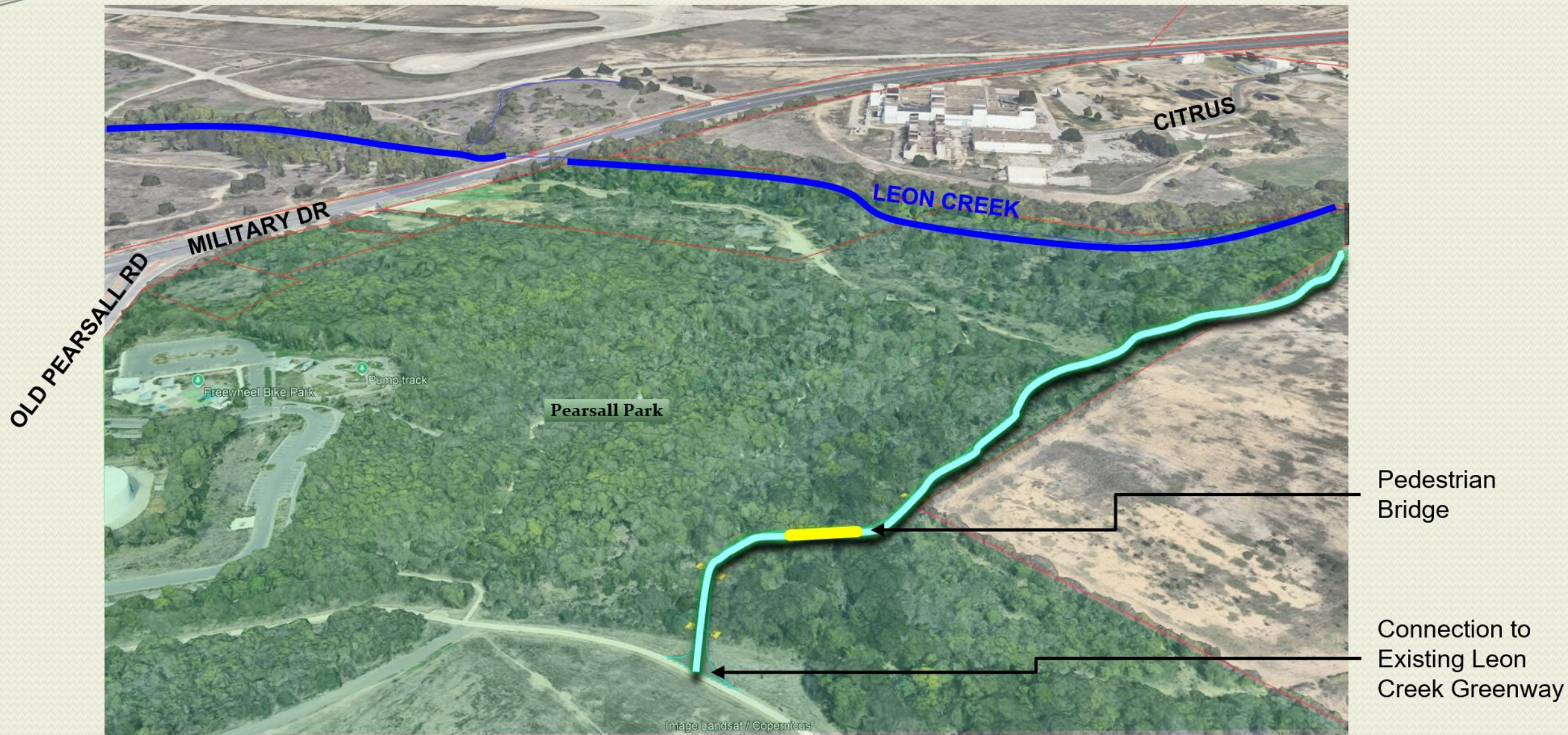


# Leon Greenway Connection via Port SA (Camargo Park to Pearsall Park) Proposed Improvements – Trail View





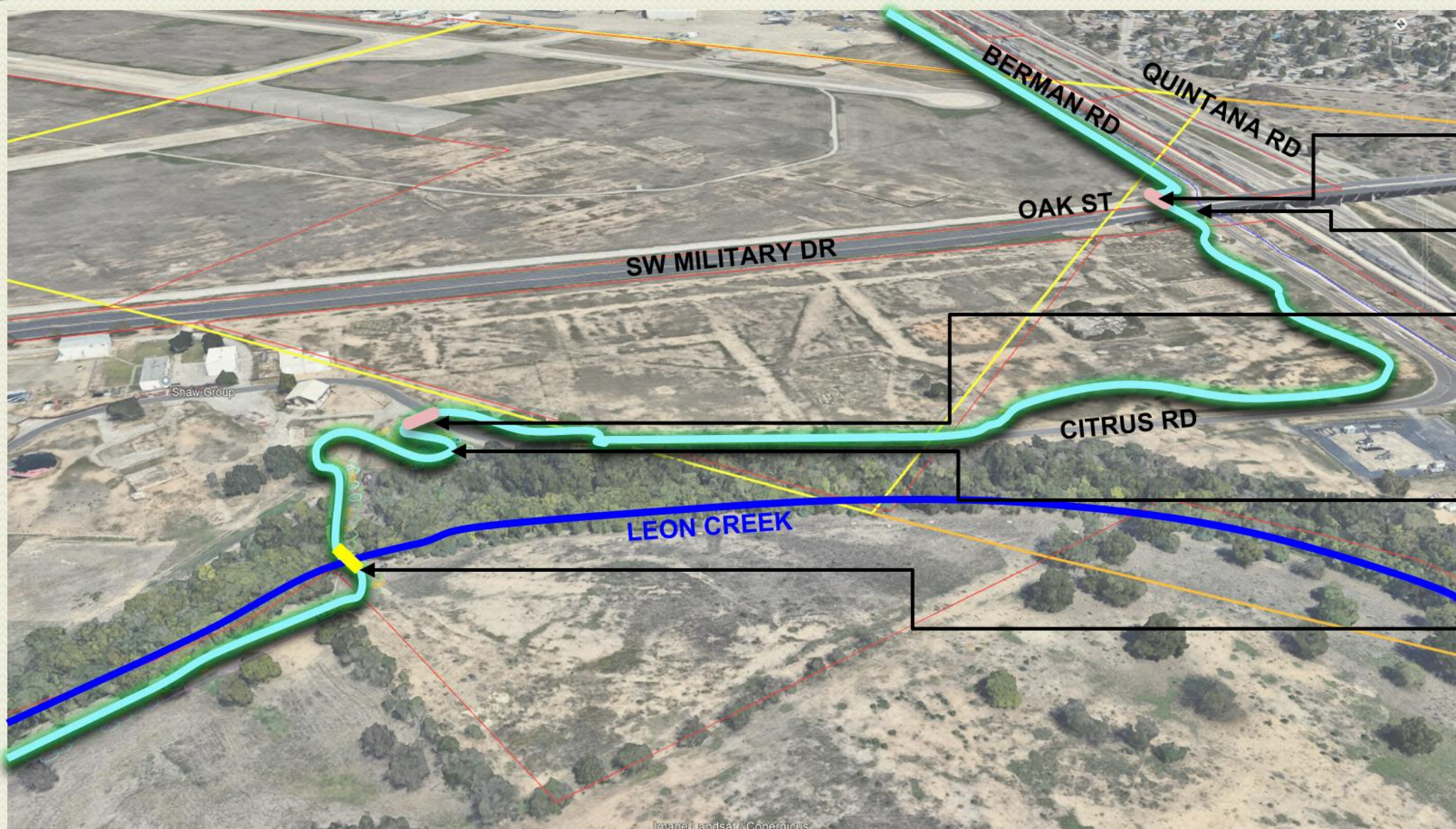
# Key Perspectives



View Looking Northeast



# Key Perspectives



Oak St Xing  
At-Grade

SW Military  
Underpass

Citrus Rd Xing  
At-Grade, Mid-Block

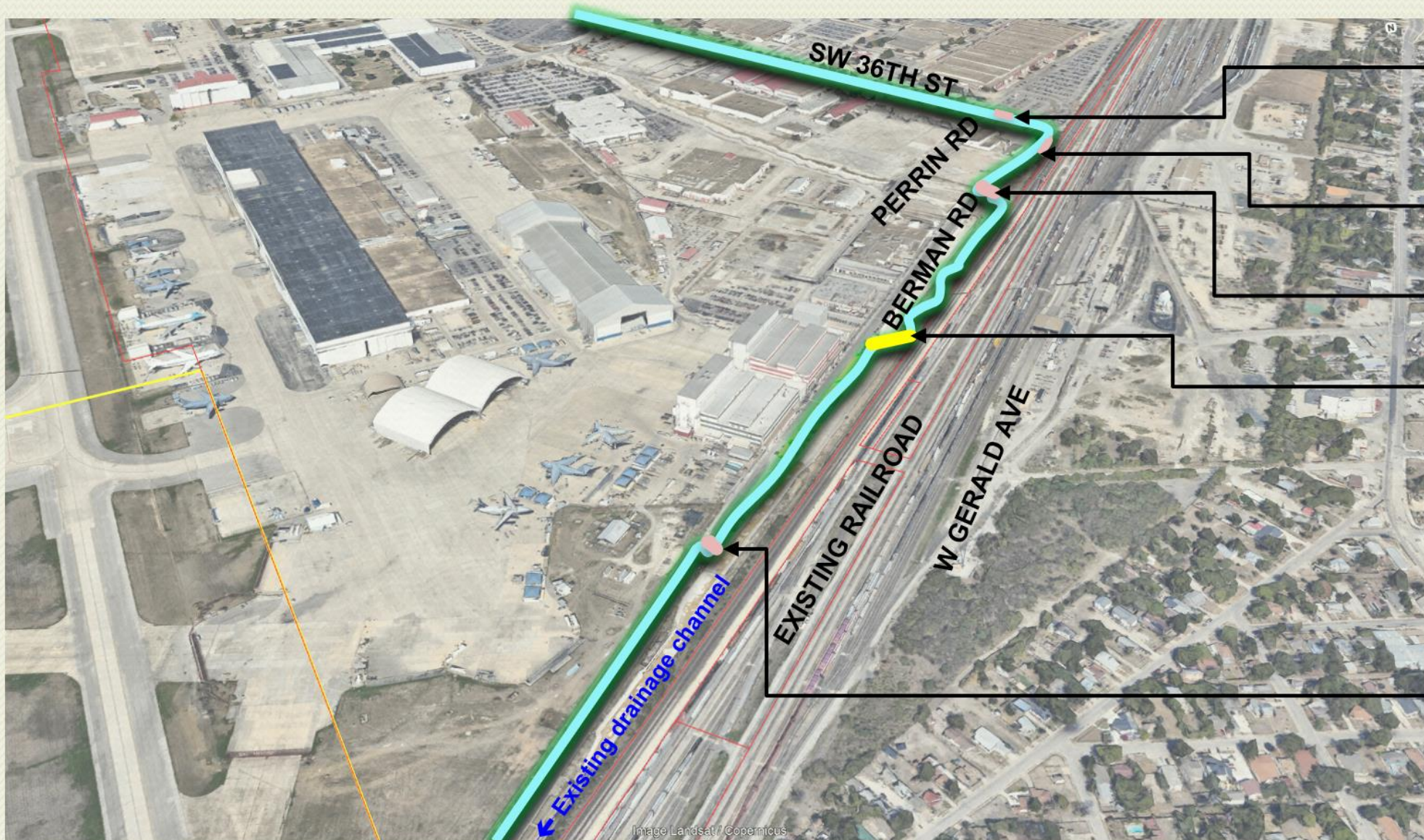
PortSA Entry  
Trailhead  
(no parking)

Pedestrian  
Bridge

View Looking Northeast



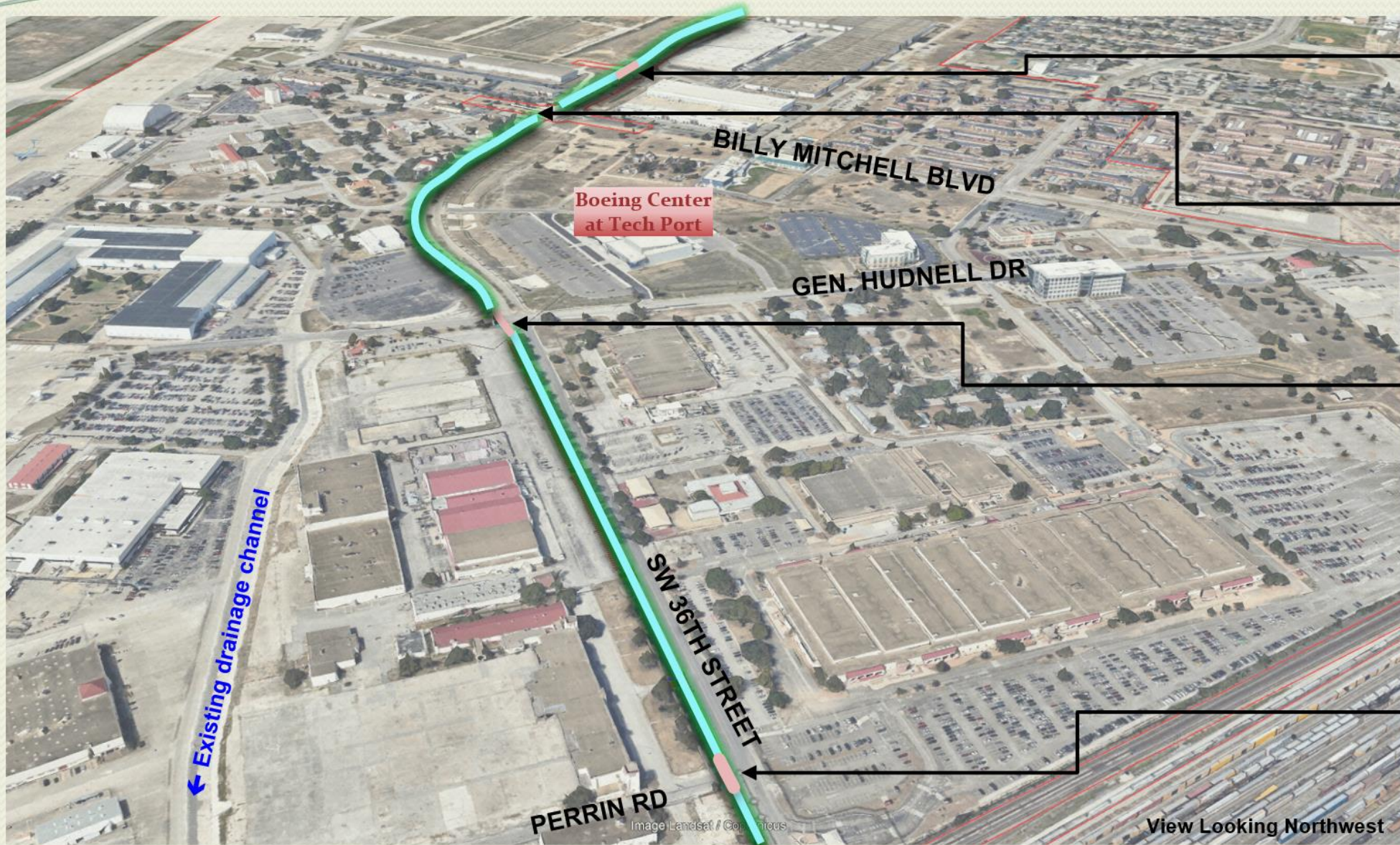
# Key Perspectives



View Looking North



# Key Perspectives



Dave Crockett Rd  
Xing  
At-Grade

Billy Mitchell / 36<sup>th</sup>  
Intersection  
Improvements Project  
At-Grade (2022 Bond)

Gen. Hudnell Xing  
At-Grade

Perrin Rd Xing  
At-Grade

View Looking Northwest



# Key Perspectives



Frank Luke Dr  
Xing  
At-Grade

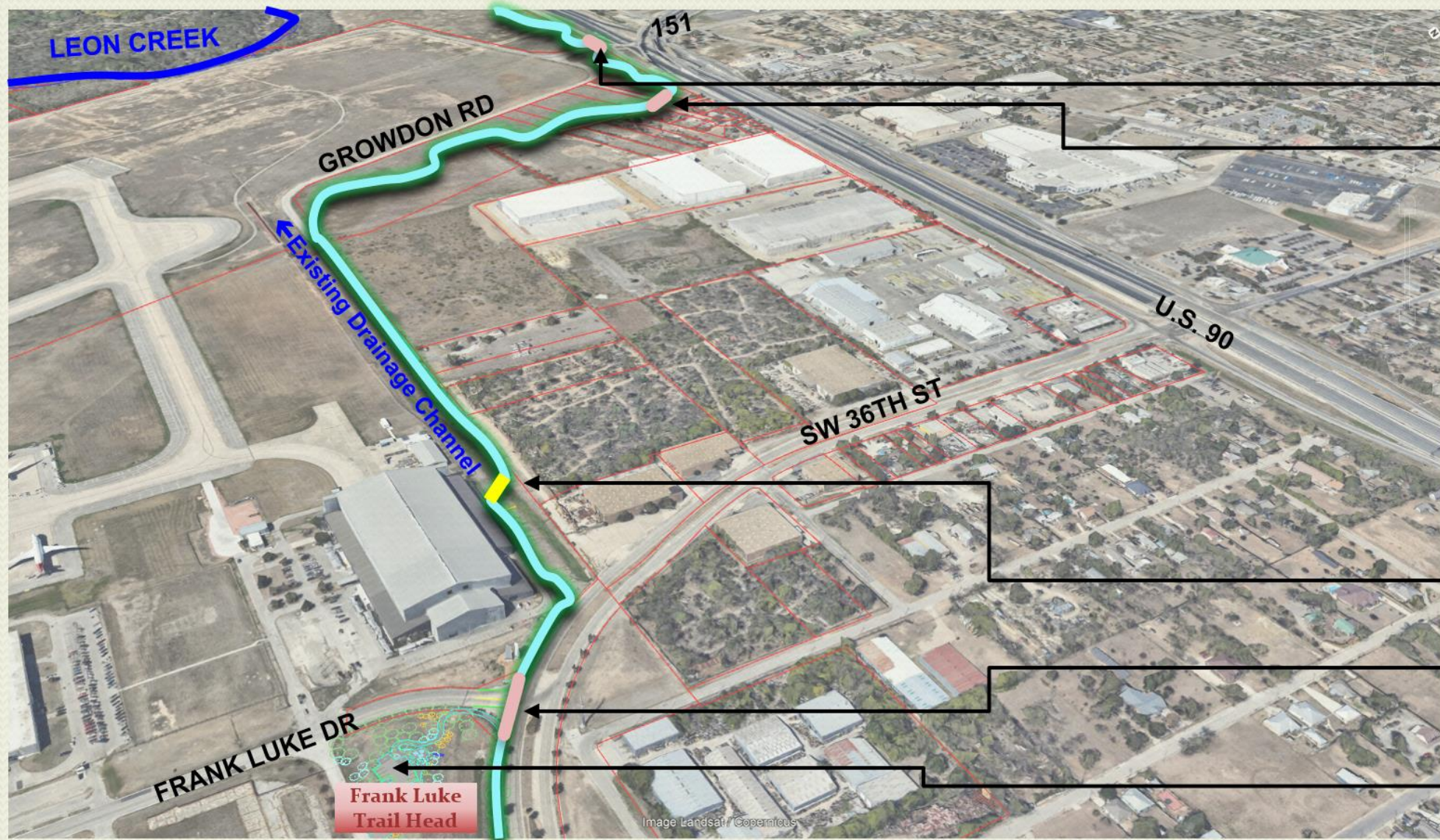
Houston Blvd Xing  
At-Grade

Billy Mitchell / 36<sup>th</sup>  
Intersection  
Improvements Project  
At-Grade

View Looking Northwest



# Key Perspectives



Acme Rd Xing  
At-Grade  
Mateo Ln Xing  
At-Grade

Pedestrian  
Bridge  
Frank Luke Dr  
Xing  
At-Grade  
Proposed  
Trailhead at  
Frank Luke  
(w/parking)

View Looking Northwest



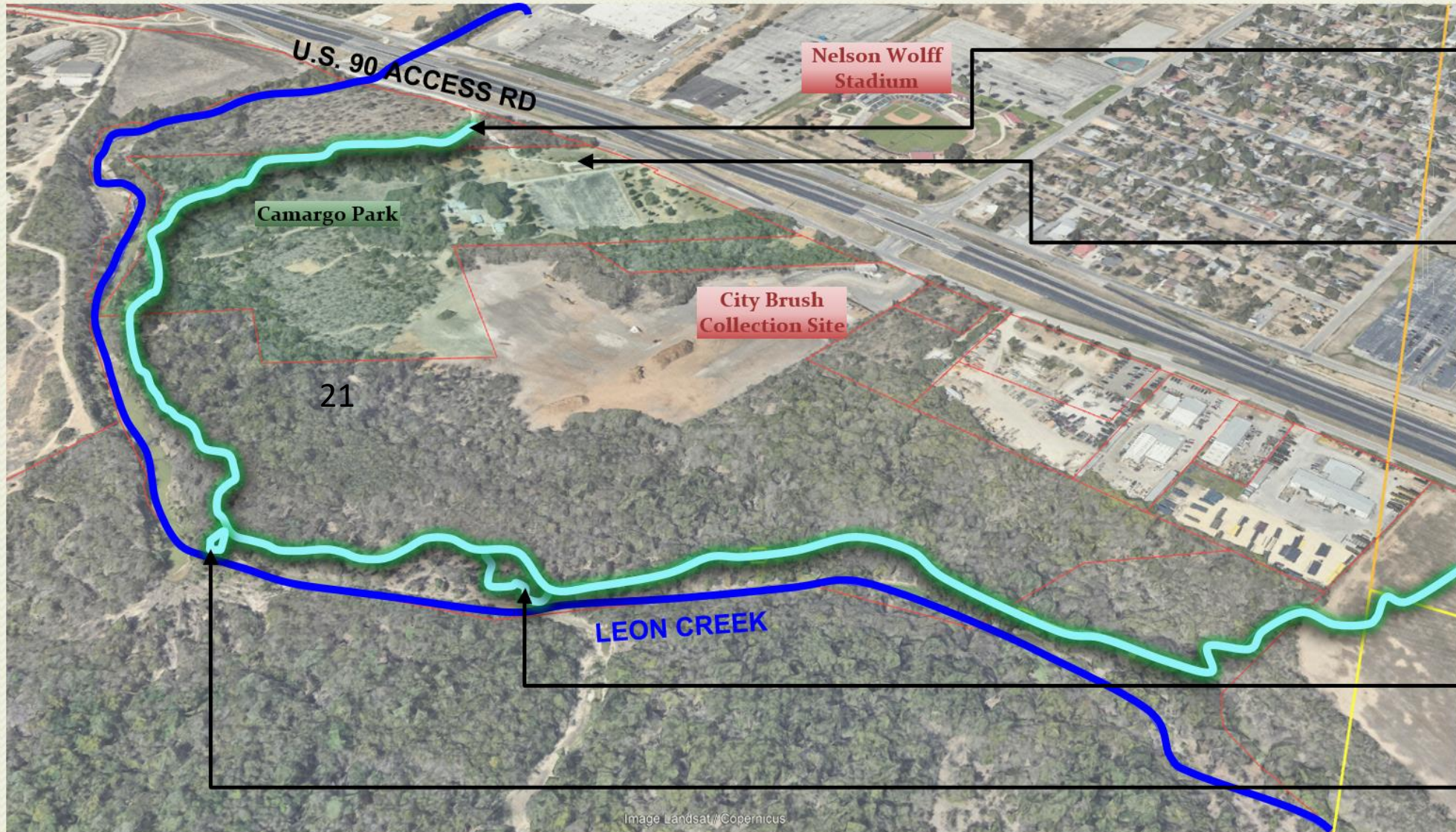
# Key Perspectives



View Looking Northwest



# Key Perspectives



Connection to  
Existing Leon  
Creek Greenway

Existing  
Camargo Park  
Trailhead

Leon Creek  
Overlook Node

Leon Creek  
Overlook Node

Image Landsat/Copernicus

View Looking Northwest



# Leon Greenway Connection via Port SA (Camargo Park to Pearsall Park) Project Schedule

- **Current Design: 40%**
- **Estimated Design Completion: Summer 2026**
- **Design Budget: \$1,886,500.00**





# Leon Greenway Connection via Port SA (Camargo Park to Pearsall Park) Comments and Questions

- Questions and Answers
- If you haven't already, **please sign-in**
- Identify the following:



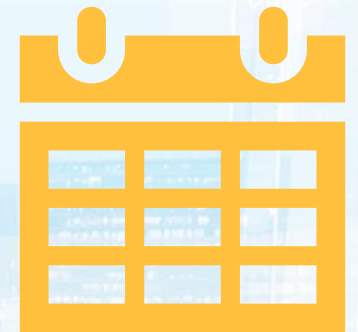
**Who**

To Communicate With



**Communication Type**

Email, Text, Phone Call Or In Person



**Frequency**

Daily, Weekly, etc...





# Leon Greenway Connection via Port SA (Camargo Park to Pearsall Park) Project Communications

**Joe Garcia**  
**Capital Projects Officer**  
(210) 207- 0097  
Joe.Garcia5@sanantonio.gov



[saspeakup.com/leoncreek](https://saspeakup.com/leoncreek)

**CONNECT WITH US!**



**#SA2022Bond | [www.sanantonio.gov/2022Bond](http://www.sanantonio.gov/2022Bond)**